

1230-16-H/S-PBT

1230-16-H/S-SN-PBT

PORTALAMPADE A COLONNA PER LAMPADE FLUORESCENTI LINEARI T8-T12 ADATTI PER CIRCUITI INSTANT START TOMBSTONE LAMPHOLDER FOR T8-T12 FLUORESCENT LINEAR LAMPS SUITABLE FOR "INSTANT START" CIRCUITS

Dati tecnici

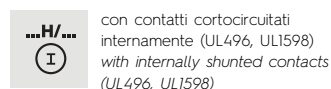
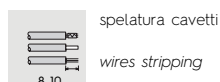
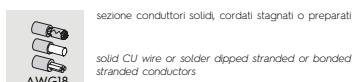
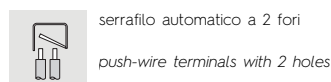
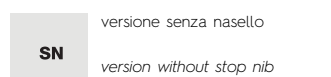
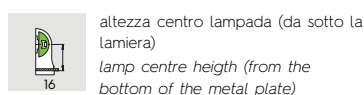
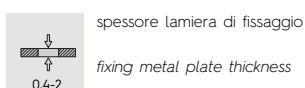
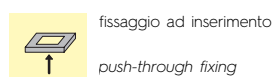
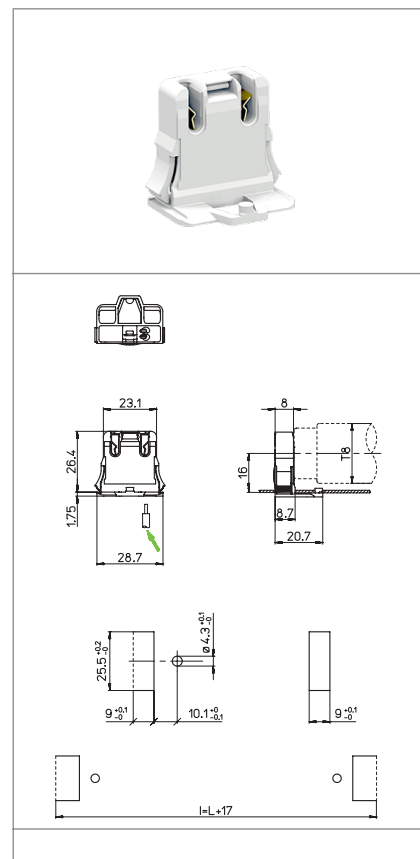
Technical data

- Attacco lampada - Lamp Cap	G13
- Dati nominali (UL) - Rating (UL)	660W-600V
- Temperatura nominale (UL496) - Temperature rating (UL496)	HT120

Caratteristiche

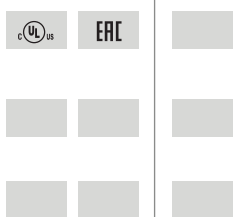
Characteristics

- Corpo in PBT bianco
- White PBT body
- Contatti in lega di rame cortocircuitati
- Copper alloy shunted contacts



Marchi di qualità

Quality marks



Direttive Europee

European directives

Conforme "RoHS"
"RoHS" compliant
Non soggetto alla "RAEE"
Not subject to "WEEE"

Pesi e confezioni

Weights and packaging

Art. Codice prodotti Product references	g Peso netto Net weight	n° pz per sacco per bag	n° pz per scatola per box	n° pz per cartone per carton
1230-16-H/S-PBT	4,6	500		
1230-16-H/S-SN-PBT	4,6	500		

Note

Notes