

## 2675/SP/43

### MORSETTO PER APPARECCHI DI ILLUMINAZIONE TERMINAL BLOCK FOR LIGHTING FIXTURES

#### Dati tecnici

##### Technical data

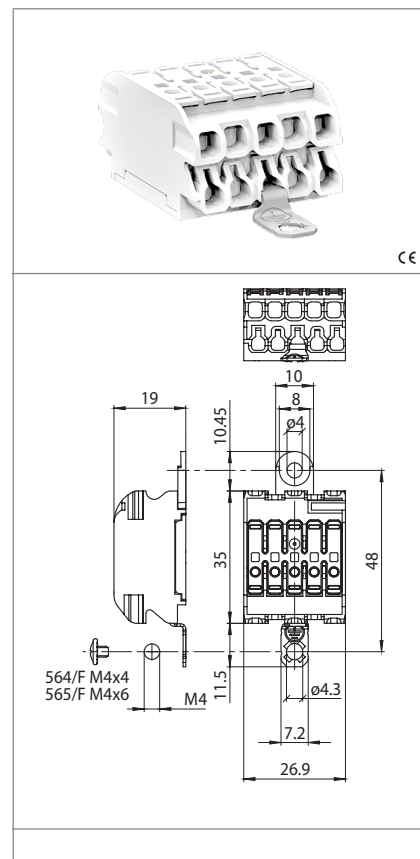
- Poli - Poles	4P+E
- Corrente e tensione nominale - Rated current and voltage	24A-450V
- Temperatura massima di funzionamento (IEC) - Maximum operating temperature (IEC)	T85
- Grado di protezione - Protection index	IP20






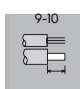


#### Caratteristiche

##### Characteristics

- Corpo in policarbonato bianco  
– White polycarbonate body
- Corpo serrafilo in rame/acciaio stagnato  
– Internal part in tin plated copper/steel
- Connessione di terra in acciaio stagnato  
– Earth Connection in tin plated steel

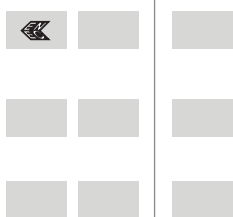
Per specifiche cavetti vedi info tecniche del capitolo  
For wires' specs. see the chapter technical info



 fissaggio con vite screw fixing	 spelatura cavetti cordati, solidi e flessibili stranded, solid and flexible wires stripping	 serrafilo automatico a 2 fori push-wire terminals with 2 holes	
 sezione conduttore cordato e solido stranded and solid conductor section	 spelatura cavetti wires stripping	 564/F 565/F	

#### Marchi di qualità

##### Quality marks



#### Direttive Europee

##### European directives

Conforme "RoHS"  
"RoHS" compliant  
Non soggetto alla "RAEE"  
Not subject to "WEEE"

#### Pesi e confezioni

##### Weights and packaging

Art. Codice prodotti Product references	g Peso netto Net weight	n° pz per sacco per bag	n° pz per scatola per box	n° pz per cartone per carton
2675/SP/43	15,4	500		

#### Note

##### Notes

**Note**

*Note*

**SERRAFILO AUTOMATICO DEGLI ART. 2675/..**

**PUSH WIRE TERMINALS OF ART. 2675/...**

