

## 310-1/VA

### PORTALAMPADE PER LAMPADE A SCARICA SODIO ALTA PRESSIONE LAMPHOLDER FOR SODIUM VAPOUR DISCHARGE LAMPS

#### Dati tecnici

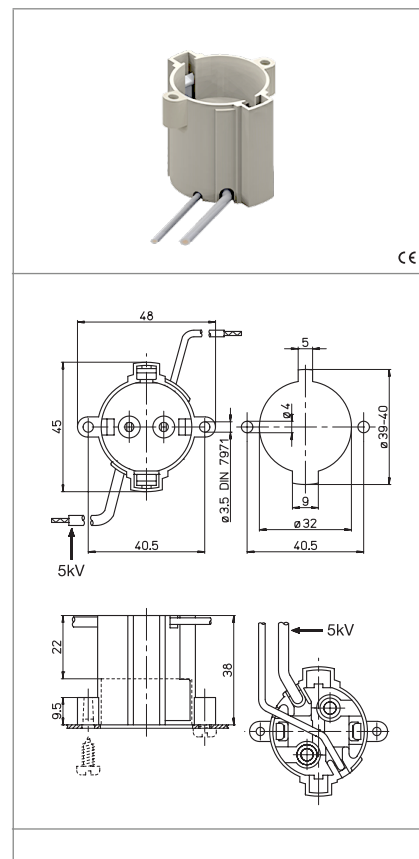
##### Technical data

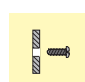
- Attacco lampada - Lamp Cap	PGI2-1
- Corrente e tensione nominale - Rated current and voltage	4A-500V
- Temperatura massima di funzionamento (IEC) - Maximum operating temperature (IEC)	T200
- Grado di protezione - Protection index	IP20
- Categoria di sovratensione - Impulse withstand category	III


#### Caratteristiche


##### Characteristics


- Corpo in PET naturale  
- Natural PET body
- Contatti in nichel  
- Nickel contacts
- Distanze superficiali: 10 mm  
- Creepage distances: 10 mm





 fissaggio con vite autofilettante  
fixing with self-tapping screw

 conduttore saldato elettricamente al contatto  
conductor electrically spot-welded to the contact

 sezione conduttore flessibile con fascetta  
section of the flexible conductor with ferrule

 sezione conduttore flessibile con fascetta  
section of the flexible conductor with ferrule

 lunghezza cavetto flessibile  
flexible wire length  
20 cm

 adatto per tensione di accensione ad impulsi fino a...  
suitable for impulse ignition voltage up to...  
5kV

#### Marchi di qualità

##### Quality marks



#### Direttive Europee

##### European directives

Conforme "RoHS"  
"RoHS" compliant  
Non soggetto alla "RAEE"  
Not subject to "WEEE"

#### Pesi e confezioni

##### Weights and packaging

Art. Codice prodotti Product references	g Peso netto Net weight	n° pz per sacco per bag	n° pz per scatola per box	n° pz per cartone per carton
310-1/VA	31,2		50	

#### Note

##### Notes